

**Innovative, Leading, High-End**

## **USER-NEW Design outdoor LED display**

**Unique design meets high - brightness!  
Our outdoor LED floor standing screen,  
with ultra thin profile, offers breath  
taking high,definition display!**





## Innovation as the Driver

The high-brightness cold screen is naturally striking.

3000 nit standard brightness, 4000 nit medium brightness, 5000 nit high brightness



## Image Quality Performance

Ultimate refresh, stunning visual effects

Ultra-high refresh rate with 7680Hz flicker-free display



## Reliable Assurance

Operates throughout the entire season, ensuring stability and reliability.

Ultra-low power consumption with exceptional screen accuracy: 550 W/m<sup>2</sup>



## Size of Product

Diverse sizes for flexible adaptation

Versatile and flexible in size, available in 71–88 inches

# Innovation as the Driver · Highlighting Cold Screen Technology

## ⚙️ Ultra-high-brightness inverted COB patented technology

With a brightness of up to **5000 cd/m<sup>2</sup>**, it withstands intense midday sunlight while delivering consistently clear and striking images.

## 🌡️ Energy-saving cold screen technology

The all-white field achieves a power consumption as low as **550W/m<sup>2</sup>**, reducing heat generation at the source and realizing an industry-leading low-temperature cold screen.

## 🛡️ Durable and economical

**IP 65**

protection extends screen life and significantly reduces operating costs



# Ultimate Image Quality - An Astonishing Visual Experience

## ⚡ Ultra-high refresh rate

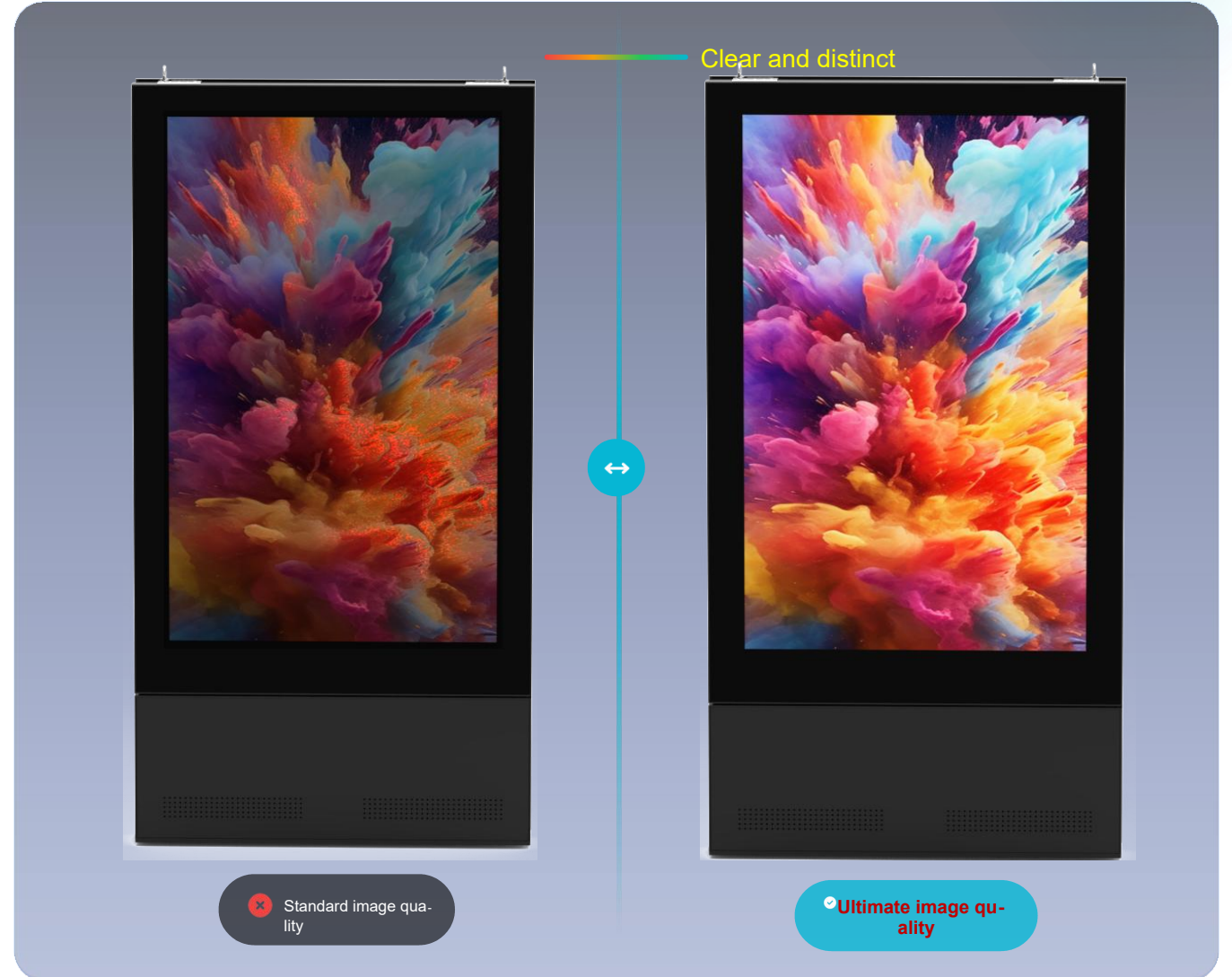
# 7680Hz

The footage is smooth without blur or flicker, with no visual artifacts or water ripple effects during shooting, meeting high-end commercial videography requirements.

## 🔦 Ultra-high contrast

# 30000:1

The dark field displays pure black, while the bright field offers luminous clarity, creating stunning visual effects on cold-colored screens for outdoor applications.



## Flexible Adaptation · Comprehensive Coverage for Diverse Scenarios

71-75inch

85-88inch

Single-sided |  
Double-sided

P1.2--P2.6



The multi-spacing and multi-size solution allows flexible combinations, enabling easy creation of premium display scenarios and application solutions.

# Operates Throughout All Weather Conditions

## Stable and Reliable

### Stable Operation Around the Clock



#### Dust Protection

Completely prevent dust from entering



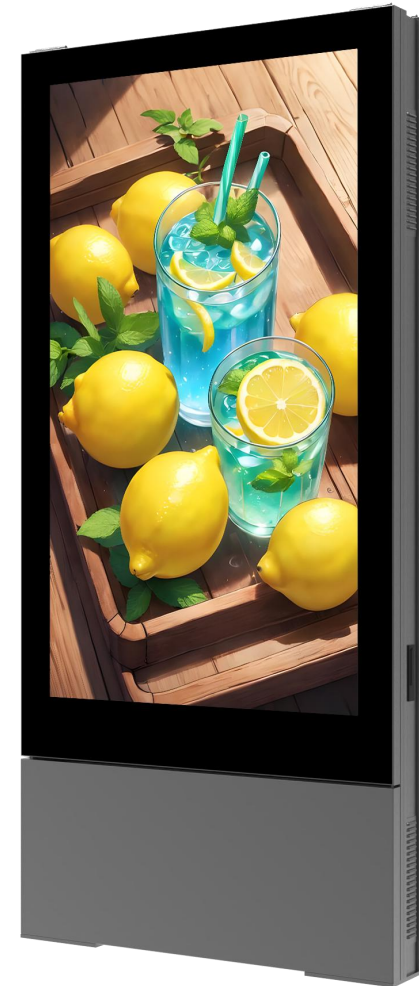
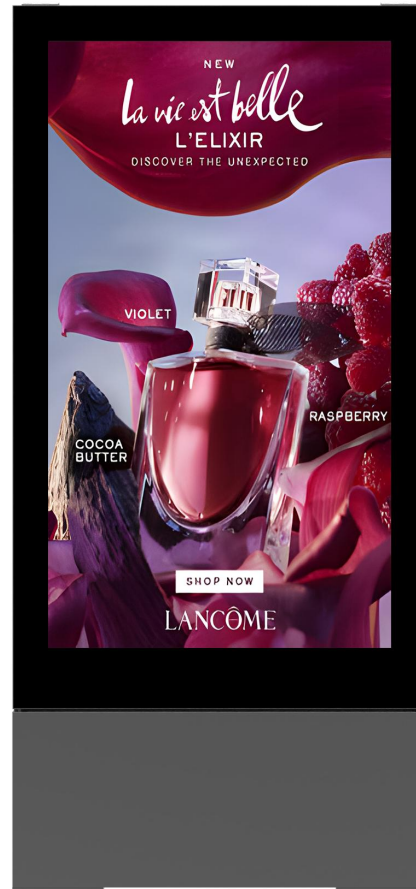
#### Moisture-Proof and Waterproof

Resist water spraying from all directions



#### IP 65 Protection Rating

Adapt to various harsh outdoor environments



# Intelligent and Efficient · Cluster Management



Supports 4G/5G, Wi-Fi, internet, USB, HDMI, Wi-Fi with built-in hotspot, and cloud network app cluster management for information publishing.

## Flexible Adaptation · Comprehensive Coverage for Diverse Scenarios: COB 75-Inch Single-Sided Panel

Parameter Name	Technical Specifications Features		
Product Model	FS-XD-P1.2-COB75	FS-XD-P1.4-COB75	FS-XD-P1.8-COB75
Encapsulation Method: Encapsulation	Inverted COB Flip-chip COB		
Pixel Pitch (mm)	1.24	1.48	1.86
Screen display size: LED Screen Size (W × H) (mm)	938×1666		
Resolution (W × H) (pixels)	756×1344	630×1120	504×896
Display ratio (W × H)	Standard 9: 16		
Display area (m <sup>2</sup> )	1.5627		
Total size (W × H × D) (mm)	1200 mm (W) × 2450 mm (H) × 185 mm (T) (excluding the base of 350 mm), ±2 mm		
Total weight (kg per unit)	215		
IP Rating (Front/Rear)	Positive IP65 rating		
Calibrated maximum brightness (Max. Brightness, cd/m <sup>2</sup> )	≥4000		
Refresh Rate (Hz)	7680		
Adjustable Color Temp Range (K)	6500 (adjustable range: 3000–10000) Adjustable		
Contrast Ratio	≥30000:1		
Working Voltage Power Supply (V)	AC 100-240V (50/60Hz)		
Maximum power consumption (W per unit)	860	860	860
Average power consumption (Avg. Power Consumption, W per unit)	350	350	350

Note: The final product specifications are subject to the official product release.

## Flexible Adaptation · Comprehensive

### Coverage for Diverse Scenari-os: COB 75-Inch Double-Sided Display

Parameter Name	Technical Specifications Features		
Product Model	FS-XD-P1.2-COB75DS	FS-XD-P1.4-COB75DS	FS-XD-P1.8-COB75DS
Encapsulation Method: Encapsulation	Inverted COB Flip-chip COB		
Pixel Pitch (mm)	1.24	1.48	1.86
Screen display size: LED Screen Size (W × H) (mm)	938×1666		
Resolution (W × H) (pixels)	756×1344 per panel	630×1120 per panel	504×896 per surface
Display ratio (W × H)	<b>Standard 9: 16</b>		
Display area (m <sup>2</sup> )	1.5627 * 2 sides		
Total size (W × H × D) (mm)	1138 mm (W) × 2436 mm (H) × 232 mm (T) (excluding the 350 mm base) ±2 mm		
Total weight (kg per unit)	285		
IP Rating (Front/Rear)	Positive IP65 rating		
Calibrated maximum brightness (Max. Brightness, cd/m <sup>2</sup> )	≥4000		
Refresh Rate (Hz)	7680		
Adjustable Color Temp Range (K)	6500 (adjustable range: 3000–10000) Adjustable		
Contrast Ratio	≥30000:1		
Working Voltage Power Supply (V)	AC 100-240V (50/60Hz)		
Maximum power consumption (W per unit)	1720	1720	1720
Average power consumption (Avg. Power Consumption, W per unit)	700	700	700

Note: The final product specifications are subject to the official product release.

## Flexible Adaptation · Comprehensive Coverage for Diverse Scenarios: COB 71-Inch Single-Sided Panel

Parameter Name	Technical Specifications Features		
Product Model	FS-BK1.5-COB71	FS-BK1.9-COB71	FS-BK2.6-COB71
Encapsulation Method: Encapsulation	Inverted COB Flip-chip COB		
Pixel Pitch (mm)	1.5625	1.953	2.604
Screen display size: LED Screen Size (W × H) (mm)	1000×1500		
Resolution (W × H) (pixels)	640×960	512×768	384×576
Display ratio (W × H)	9.4: 16		
Display area (m <sup>2</sup> )	1.5		
Total size (W × H × D) (mm)	1200 mm (W) × 2350 mm (H) × 188 mm (T) (excluding the 350 mm base) ±2 mm		
Total weight (kg per unit)	215		
IP Rating (Front/Rear)	Positive IP65 rating		
Calibrated maximum brightness (Max. Brightness, cd/m <sup>2</sup> )	≥3000		
Refresh Rate (Hz)	7680		
Adjustable Color Temp Range (K)	6500 (adjustable range: 3000–10000) Adjustable		
Contrast Ratio	≥30000:1		
Working Voltage Power Supply (V)	AC 100-240V (50/60Hz)		
Maximum power consumption (W per unit)	1000	1000	1000
Average power consumption (Avg. Power Consumption, W per unit)	500	500	500

Note: The final product specifications are subject to the official product release.

## Flexible Adaptation · Comprehensive Coverage for Diverse Scenarios: COB 71-Inch Double-Sided Display

Parameter Name	Technical Specifications Features		
Product Model	FS-BK1.5-COB71DS	FS-BK1.9-COB71DS	FS-BK2.6-COB71DS
Encapsulation Method: Encapsulation	Inverted COB Flip-chip COB		
Pixel Pitch (mm)	1.5625	1.953	2.604
Screen display size: LED Screen Size (W × H) (mm)	1000×1500		
Resolution (W × H) (pixels)	640×960 per panel	512×768 per panel	384×576 per side
Display ratio (W × H)	9.4: 16		
Display area (m <sup>2</sup> )	1.5*2 sides		
Total size (W × H × D) (mm)	1200 mm (W) × 2350 mm (H) × 188 mm (T) (excluding the 350 mm base) ±2 mm		
Total weight (kg per unit)	285		
IP Rating (Front/Rear)	Positive IP65 rating		
Calibrated maximum brightness (Max. Brightness, cd/m <sup>2</sup> )	≥3000		
Refresh Rate (Hz)	7680		
Adjustable Color Temp Range (K)	6500 (adjustable range: 3000–10000) Adjustable		
Contrast Ratio	≥30000:1		
Working Voltage Power Supply (V)	AC 100-240V (50/60Hz)		
Maximum power consumption (W per unit)	2000	2000	2000
Average power consumption (Avg. Power Consumption, W per unit)	1000	1000	1000

Note: The final product specifications are subject to the official product release.

## Flexible Adaptation · Comprehensive Coverage for Diverse Scenarios: COB 88-Inch Single-Sided Panel

Parameter Name	Technical Specifications Features		
Product Model	FS-BK1.5-COB88	FS-BK1.9-COB88	FS-BK2.6-COB88
Encapsulation Method: Encapsulation	Inverted COB Flip-chip COB		
Pixel Pitch (mm)	1.5625	1.953	2.604
Screen display size: LED Screen Size (W × H) (mm)	1000×2000		
Resolution (W × H) (pixels)	640×1280	512×1024	384×768
Display ratio (W × H)	8: 16		
Display area (m <sup>2</sup> )	2.0		
Total size (W × H × D) (mm)	1200 mm (W) × 2350 mm (H) × 185 mm (T) (excluding the 350 mm base) ±2 mm		
Total weight (kg per unit)	215		
IP Rating (Front/Rear)	Positive IP65 rating		
Calibrated maximum brightness (Max. Brightness, cd/m <sup>2</sup> )	≥3000		
Refresh Rate (Hz)	7680		
Adjustable Color Temp Range (K)	6500 (adjustable range: 3000–10000) Adjustable		
Contrast Ratio	≥30000:1		
Working Voltage Power Supply (V)	AC 100-240V (50/60Hz)		
Maximum power consumption (W per unit)	1400	1400	1400
Average power consumption (Avg. Power Consumption, W per unit)	700	700	700

Note: The final product specifications are subject to the official product release.

## Flexible Adaptation · Comprehensive Coverage for Diverse Scenarios: COB 88-Inch Double-Sided Display

Parameter Name	Technical Specifications Features		
Product Model	FS-BK1.5-COB88DS	FS-BK1.9-COB88DS	FS-BK2.6-COB88DS
Encapsulation Method: Encapsulation	Inverted COB Flip-chip COB		
Pixel Pitch (mm)	1.5625	1.953	2.604
Screen display size: LED Screen Size (W × H) (mm)	1000×2000		
Resolution (W × H) (pixels)	640×1280 per panel	512×1024 per face	384×768 per panel
Display ratio (W × H)	8: 16		
Display area (m <sup>2</sup> )	8*2 faces		
Total size (W × H × D) (mm)	1200 mm (W) × 2350 mm (H) × 232 mm (T) (excluding the base of 350 mm), ±2 mm		
Total weight (kg per unit)	285		
IP Rating (Front/Rear)	Positive IP65 rating		
Calibrated maximum brightness (Max. Brightness, cd/m <sup>2</sup> )	≥3000		
Refresh Rate (Hz)	7680		
Adjustable Color Temp Range (K)	6500 (adjustable range: 3000–10000) Adjustable		
Contrast Ratio	≥30000:1		
Working Voltage Power Supply (V)	AC 100-240V (50/60Hz)		
Maximum power consumption (W per unit)	2600	2600	2600
Average power consumption (Avg. Power Consumption, W per unit)	1400	1400	1400

Note: The final product specifications are subject to the official product release.

## Flexible Adaptation · Comprehensive Coverage for Diverse Scenarios: GOB 73-Inch Single-Sided Display

Parameter Name	Technical Specifications Features		
Product Model	FS-US1.5-GOB73	FS-US1.8-GOB73	FS-US2-GOB73
Encapsulation Method: Encapsulation	Outdoors GOB		
Pixel Pitch (mm)	1.53	1.86	2.0
Screen display size: LED Screen Size (W × H) (mm)	960×1600		
Resolution (W × H) (pixels)	624×1040	516×860	480×800
Display ratio (W × H)	9.6: 16		
Display area (m <sup>2</sup> )	1.44		
Total size (W × H × D) (mm)	1140 mm (W) × 2110 mm (H) × 185 mm (T) (excluding the 350 mm base) ±2 mm		
Total weight (kg per unit)	215		
IP Rating (Front/Rear)	Positive IP65 rating		
Calibrated maximum brightness (Max. Brightness, cd/m <sup>2</sup> )	<b>≥5000</b>		
Refresh Rate (Hz)	7680		
Adjustable Color Temp Range (K)	6500 (adjustable range: 3000–10000) Adjustable		
Contrast Ratio	≥30000:1		
Working Voltage Power Supply (V)	AC 100-240V (50/60Hz)		
Maximum power consumption (W per unit)	1200	1200	1200
Average power consumption (Avg. Power Consumption, W per unit)	600	600	600

Note: The final product specifications are subject to the official product release.

# Flexible Adaptation · Comprehensive Coverage for

## Diverse Scenarios: GOB 73-Inch Double-Sided Display

Parameter Name	Technical Specifications Features		
Product Model	FS-US1.5-GOB73DS	FS-US1.8-GOB73DS	FS-US2-GOB73DS
Encapsulation Method: Encapsulation	Outdoors GOB		
Pixel Pitch (mm)	1.53	1.86	2.0
Screen display size: LED Screen Size (W × H) (mm)	960×1600		
Resolution (W × H) (pixels)	624×1040 per panel	516×860 per surface	480×800/face
Display ratio (W × H)	9.6: 16		
Display area (m <sup>2</sup> )	1.44*2 sides		
Total size (W × H × D) (mm)	1140 mm (W) × 2110 mm (H) × 232 mm (T) (excluding the base of 350 mm), ±2 mm		
Total weight (kg per unit)	285		
IP Rating (Front/Rear)	Positive IP65 rating		
Calibrated maximum brightness (Max. Brightness, cd/m <sup>2</sup> )	<b>≥5000</b>		
Refresh Rate (Hz)	7680		
Adjustable Color Temp Range (K)	6500 (adjustable range: 3000–10000) Adjustable		
Contrast Ratio	≥30000:1		
Working Voltage Power Supply (V)	AC 100-240V (50/60Hz)		
Maximum power consumption (W per unit)	2400	2400	2400
Average power consumption (Avg. Power Consumption, W per unit)	1200	1200	1200

Note: The final product specifications are subject to the official product release.

## Flexible Adaptation · Comprehensive Coverage for Diverse Scenarios: GOB 85-Inch Single-Sided Display

Parameter Name	Technical Specifications Features		
Product Model	FS-US1.5-GOB85	FS-US1.8-GOB85	FS-US2-GOB85
Encapsulation Method: Encapsulation	Outdoors GOB		
Pixel Pitch (mm)	1.53	1.86	2.0
Screen display size: LED Screen Size (W × H) (mm)	960×1920		
Resolution (W × H) (pixels)	624×1248 per panel	516×1032 per surface	480×960 per page
Display ratio (W × H)	8: 16		
Display area (m <sup>2</sup> )	1.8432		
Total size (W × H × D) (mm)	1140 mm (W) × 2110 mm (H) × 185 mm (T) (excluding the 350 mm base) ±2 mm		
Total weight (kg per unit)	215		
IP Rating (Front/Rear)	Positive IP65 rating		
Calibrated maximum brightness (Max. Brightness, cd/m <sup>2</sup> )	<b>≥5000</b>		
Refresh Rate (Hz)	7680		
Adjustable Color Temp Range (K)	6500 (adjustable range: 3000–10000) Adjustable		
Contrast Ratio	≥30000:1		
Working Voltage Power Supply (V)	AC 100-240V (50/60Hz)		
Maximum power consumption (W per unit)	1500	1500	1500
Average power consumption (Avg. Power Consumption, W per unit)	800	800	800

Note: The final product specifications are subject to the official product release.

## Flexible Adaptation · Comprehensive Coverage for Diverse Scenarios: GOB 85-Inch Double-Sided Display

Parameter Name	Technical Specifications Features		
Product Model	FS-US1.5-GOB85DS	FS-US1.8-GOB85DS	FS-US2-GOB85DS
Encapsulation Method: Encapsulation	Outdoors GOB		
Pixel Pitch (mm)	1.53	1.86	2.0
Screen display size: LED Screen Size (W × H) (mm)	960×1920		
Resolution (W × H) (pixels)	624×1248 per panel	516×1032 per surface	480×960 per page
Display ratio (W × H)	8: 16		
Display area (m <sup>2</sup> )	1.8432 * 2 sides		
Total size (W × H × D) (mm)	1140 mm (W) × 2110 mm (H) × 232 mm (T) (excluding the base of 350 mm), ±2 mm		
Total weight (kg per unit)	285		
IP Rating (Front/Rear)	Positive IP65 rating		
Calibrated maximum brightness (Max. Brightness, cd/m <sup>2</sup> )	<b>≥5000</b>		
Refresh Rate (Hz)	7680		
Adjustable Color Temp Range (K)	6500 (adjustable range: 3000–10000) Adjustable		
Contrast Ratio	≥30000:1		
Working Voltage Power Supply (V)	AC 100-240V (50/60Hz)		
Maximum power consumption (W per unit)	3000	3000	3000
Average power consumption (Avg. Power Consumption, W per unit)	1600	1600	1600

Note: The final product specifications are subject to the official product release.

# Open a New Chapter in Outdoor Display



## High Brightness, Low Power Consumption

Operating costs reduced by **30%**



## Cold Display Technology

Life expectancy increased by **50%**



## Ultimate Image Quality

Enhanced appeal of the ad content



## Flexible Adaptation

Meet the needs of various scenarios

